

# YOUR PIECE OF THE $\hat{\text{PI}}$

A VISITOR'S GUIDE TO PERIMETER INSTITUTE



**Last Updated: July 2023**

Apartment Amenities	5
Phone	5
Internet	5
Facilities	8
Health Care	14
Tourism	22
Maps	25





<b>A</b>		<b>L</b>	
Access Cards.....	5	Library.....	12
Apartment Amenities.....	7-8	Licensing & Vehicle Transfers/Imports.....	18
• Internet.....	7	<b>M</b>	
• Phone.....	7	Maps.....	27-29
<b>B</b>		Movies.....	See Entertainment
Banking.....	17	<b>O</b>	
Black Hole Bistro.....	See Facilities	Office.....	13
Buses.....	See Transportation	<b>P</b>	
<b>C</b>		Parking.....	9
Car Rentals.....	See Transportation	Photocopying and Printer Services.....	13
Computers.....	See Office	Physicians.....	See Health Care
<b>D</b>		PINET.....	See Information Portals
Doctors.....	See Health Care	Post Office.....	17
<b>E</b>		<b>R</b>	
Emergency Numbers.....	16	Recreation	
Entertainment.....	21	• Area Facilities.....	24
<b>F</b>		• Parks.....	24
Facilities		Restaurants.....	23
• Black Hole Bistro.....	10	<b>S</b>	
• Change Rooms & Sauna.....	11	Shopping.....	22
• Fitness Centre.....	11	Smoking.....	11
• Fireplaces.....	11	Spousal Network.....	17
Food		Staff Directory.....	5
• Farmers Market.....	15	<b>T</b>	
• Grocery Stores.....	15	Telephone.....	See Office
• Restaurants.....	23	Tourism.....	24
<b>H</b>		• Around Canada.....	27
Health Care		Transportation.....	19
• Hospitals.....	16	<b>V</b>	
• Pharmacies.....	16	Visitor Housing.....	See Apartment Amenities
• Walk In Clinics.....	16	Visiting Waterloo.....	15
Housing.....	See Accommodations	<b>W</b>	
<b>I</b>		Website.....	See Information Portals
Information Portals.....	14		
Internet.....	See Apartment Amenities		







## ABOUT THIS GUIDE

At Perimeter Institute we strive to provide our visitors with all the information and tools they need to make their visit as comfortable and productive as possible.

In this guide you will find information on the amenities we offer to further aid in your enjoyment and stay with us.

The Amenities Guide also offers links to a wide range of resources, including arts and entertainment, and tourism information.

## PERIMETER INSTITUTE STAFF DIRECTORY

A current staff directory can be found on the Perimeter Portal at [pion.perimeterinstitute.ca](http://pion.perimeterinstitute.ca) under "People." You will need your PI credentials to login to access this information. Alternately, you can find information on Perimeter researchers and staff at [perimeterinstitute.ca/people](http://perimeterinstitute.ca/people).

## ACCESS CARD

Your access card grants you entry to the main building and certain areas within Perimeter. The front door is unlocked during our regular office hours of 8:30 am-5 pm, Monday to Friday. You can contact Security at (519) 569-7600 x2222, or (519) 572-7947 outside office hours, should you require extra assistance. Please notify Visitor Services and Security should you misplace your access card.





## VISITOR HOUSING

Perimeter maintains a number of apartments for visitors' use. Most apartments are within walking distance of Perimeter. In case of emergencies with your heat, electricity or water, please contact the building's superintendent:

14 Princess St.: 226-929-5881

45 Caroline: 226-989-7628

Any other issues related to your unit's amenities (such as furniture, amenities, internet, etc.) can be emailed to Facilities at [help@perimeterinstitute.ca](mailto:help@perimeterinstitute.ca), who will respond during regular office hours (Monday to Friday 8:30 am-5:00 pm).

## TELEPHONE

Each unit has a telephone for your use. If you are planning on making long-distance phone calls, please see Visitor Services or Security to purchase a \$5 long distance calling card. You may also obtain calling cards at the Shopper's Drug Mart in Waterloo Town Square (near the corner of Caroline and Erb streets).

For any issues with your phone, please contact our IT team at [help@perimeterinstitute.ca](mailto:help@perimeterinstitute.ca) or by phone (519) 569-7600 ext. 3333.

## INTERNET

### Internet Access

Our visitor housing comes equipped with high-speed internet access. To hook up your computer, connect the ethernet cord to your computer's ethernet jack and ensure that you have your computer configured to use DHCP (default behaviour). There is no need for a password. Your wireless network name and wireless password are listed on Your Perimeter Apartment Information located at the end of this guide.

## BASIC TROUBLESHOOTING FOR PHONE, INTERNET

### Phone

*Blank screen/no dial tone?*

1. Make sure the phone cable is properly plugged into the base
2. Check that the phone cable is connected from the wall to the base
3. Make sure the phone is sitting properly on the base



### Internet

*No Wireless Internet?*



1. Make sure the modem and router are plugged into power
2. If there is a power bar, make sure the power bar indicator light is on
3. Reboot the device by unplugging power from the device and wait 30 seconds and plug it back in

If you are still having equipment issues please contact the IT Help Desk via email at [help@perimeterinstitute.ca](mailto:help@perimeterinstitute.ca) or by calling (519) 569-7600 x3333.

**The following amenities are available at all Perimeter apartments:**

## COOKING & FOOD STAPLES

As you may be coming in late and not get a chance to grab something to eat, Perimeter has provided some quick snacks, coffee and tea in the apartments for your use. Please feel free to use any of the spices, cooking oils, etc. in the apartment. If it is a shared apartment and there is someone staying with you, please check with them first to see if anything is their own personal item(s).

Please note that most stores are open seven days a week, including a Valu-Mart grocery store located across from Perimeter in Waterloo Town Square (near the corner of Erb and Caroline streets).

## SAFES

Safes are located in each of the bedroom closets (in all two or more bedroom units). Please ensure you lock up your valuables and currency when leaving the apartments. The instructions for use are inside the safe. If you have any difficulties, please contact [help@perimeterinstitute.ca](mailto:help@perimeterinstitute.ca).

To use the safes:

1. Press the red button on the back of the door near the hinge, release it and you will hear two beeps. The yellow light will be on at the same time.
2. Now enter 3-8 numbers that you wish to use as a combination, and confirm by pressing the letter "B" within 15 seconds, or you will have to do it from the beginning.
3. Write down your new combination immediately and check whether your new combination has been programmed or not on conditions of the safe door opening. Note: If the red light is on it means the batteries are low. Please don't use the safe, and please email facilities at: [help@perimeterinstitute.ca](mailto:help@perimeterinstitute.ca)

## MISCELLANEOUS ITEMS

Included in the apartments are cooking utensils, dishes and glassware, a coffee pot and pots and pans. There is also an iron, hair dryer, and alarm clock. In the bathrooms, we have provided a few essentials in case you have forgotten to pack something, including toothpaste, shampoo, etc.

**Please note:** Portable air conditioners are available at 45 and 55 Caroline upon request for the living room only. Alternately, apartments are equipped with portable fans all year long.

While all units have access to laundry facilities, alternate laundry services are available nearby at Campus Coin Laundry and Dry Cleaning (150 University Ave. W., Waterloo, (519) 886-1759). You can bring in your laundry and staff will wash and fold it for a fee.

## LAUNDRY

At 45 and 55 Caroline Street North, there is a laundry room located in the basement. Laundry cards can be purchased for \$10.00 at the kiosk in the laundry room. At 14 Princess Street, a washer and dryer are located within the unit in either the utility or storage closet.





Perimeter Institute acknowledges that it is situated on the traditional territory of the Anishinaabe, Haudenosaunee, and Neutral peoples.

Perimeter Institute is located on the Haldimand Tract. After the American Revolution, the tract was granted by the British to the Six Nations of the Grand River and the Mississaugas of the Credit First Nation as compensation for their role in the war and for the loss of their traditional lands in upstate New York. Of the 950,000 acres granted to the Haudenosaunee, less than 5 percent remains Six Nations land. Only 6,100 acres remain Mississaugas of the Credit land.

We thank the Anishinaabe, Haudenosaunee, and Neutral peoples for hosting us on their land.

### 31 Caroline Street North

Perimeter Institute is a four-storey facility located at 31 Caroline Street North, Waterloo. The first floor is dedicated to common areas such as the Bistro, fitness areas, library, and lecture theatre. The Visitor Program office is found here as well. The second floor houses administrative offices on the south side, and research offices on the north side. The third floor is similar, with the addition of a seminar room, boardroom and kitchen on the south side. The fourth floor is dedicated to research offices and other seminar rooms.

### Parking

Please see reception to inquire about parking at Perimeter.



# FACILITIES AT 31 CAROLINE ST.



## KITCHEN FACILITIES

Full kitchen facilities are provided on the south side of the third floor, in the Feynman Lounge. Refrigerators are provided for your use. A soft drink machine, a snack machine, a pool table, and seating are all ready to make your day more comfortable. Fridges are provided for temporary use and are emptied on a weekly basis.

## THE BLACK HOLE BISTRO

The Bistro is open on weekdays for breakfast in the morning starting at 8:30am, and lunch from 12-2pm. Dinner service is open from 5pm – 7pm Monday – Friday. Community Night is hosted on most Thursday evenings. Fridays at 4 pm all Perimeter residents and visitors are invited to meet in the Bistro for the weekly Social. Check with your host for more details.

The Bistro is open to Perimeter residents and their guests. Members of the general public are occasionally permitted to enjoy the fine food and atmosphere in conjunction with ticketed events. Boxed Dinners can be ordered by 2pm to take home. Alcohol is available for purchase, but must be purchased outside of the visitor allowance using cash, credit or debit.

## COLLABORATION SPACES

Comfortable seating, wood-burning fire places, and blackboards make the collaboration spaces scattered throughout the building hubs for discussion and debate. Please make yourself at home, being mindful that others will appreciate you tidying the space after you leave.



## FIREPLACES

There are wood-burning fireplaces throughout the building. The fireplaces are a wonderful and safe feature of the Institute, but do require monitoring when in use. Please do not place any items, even paper, inside the fireplaces. Please contact Reception or Security at ext. 2222, or e-mail [facilities@perimeterinstitute.ca](mailto:facilities@perimeterinstitute.ca) should you wish to use a fireplace. Fires will be started and maintained by the Facilities and Security ONLY.

## FITNESS CENTRE

On the first floor, on the north side of the building behind the Reflecting Lounge, you will find an exercise room, squash court/ basketball half court and change rooms complete with saunas. For more information on using the Fitness Centre, see <https://pion.perimeterinstitute.ca/Interact/Pages/Content/Document.aspx?id=2401>.

**Important note:** This facility is not supervised. Use of the equipment is the responsibility of the guest. Children under the age of 16 are not permitted to use the fitness equipment.

## CHANGEROOMS

There are change rooms located beside the squash court for day use only. Please ensure that when you are done using the change rooms that you take all your personal belongings with you.

## SMOKING/VAPING

Regional by-laws prohibit smoking/vaping inside Perimeter Institute, as well as inside all public places in the Region of Waterloo. Smoking is permitted outside the building and ashtrays in the form of large grey pylons have been provided.

**Important note:** Smoking is not permitted in any of Perimeter's apartments.

## UNIVERSITY OF WATERLOO LIBRARY

Some longer term visitors and Perimeter residents have access (book loans and e-journals) to the University of Waterloo (UW) library system. If you are eligible for this service, you will receive a notification from the Perimeter Librarian explaining how to activate and access.





A variety of books, electronic journals, and leisure magazines can be found in the library at 31 Caroline Street North.

The main collections are housed on the first floor; the second floor is assigned as office space.

The collection is arranged using the Library of Congress classification system, an alpha-numeric identifier. Most of Perimeter's books are: Q (general science), QA (mathematics), QB (astronomy & cosmology), and QC (physics), although some other categories are represented.

#### **Some of our services**

- 24/7 access. The library is open from M-F, 8:30am - 5pm. Off-hours you will need your access card to enter.
- Web-ready computers are located on the east wall of the Library.
- A self-checkout system is located near the entrance.
- The online catalogue and e-journals are available on your desktop through the PI Portal ([pion.perimeterinstitute.ca](http://pion.perimeterinstitute.ca)), using your network username and password.
- Courtesy notices, notification of availability of requested materials, overdue accounts, recalled items, reminders to return books before departure.
- Other traditional services: inter-library loans, copyright information, intranet pages (links to ArXiv, UW e-resources, IOPScience database, other catalogues, etc.).

**Quiet environment:** The library encourages quiet conversation and collaboration to foster academic work. Please refrain from loud or disruptive conversations or other noisy behaviours. Conversation is not permitted in designated quiet study areas. Personal audio devices with earphones are permitted provided volumes are kept low. No cell phones or Skype use are permitted in the library.

**Re-shelving:** Do not reshelve library materials. Used materials should be left out on tables or in designated areas.

**Food and beverages:** These are allowed in all public spaces in the library, except at computer workstations. Please consume food in a responsible manner and dispose of trash in the waste and recycling containers provided. Remember to take your dirty dishes to the Bistro. Please be responsible and keep our library clean.

If you have any comments or questions, please contact [librarystaff@perimeterinstitute.ca](mailto:librarystaff@perimeterinstitute.ca).

Visiting researchers and collaborators are provided with a PI library account which allows you to borrow all materials unless marked "reference" or "reserve". Your Perimeter Access Card has been set up to function as a library card with the self-checkout station located near the first floor entrance. Your loan period for books is three months or the length of your stay (whichever is shorter). Periodicals are loaned for seven days.

1. You must return any item that is RECALLED as soon as possible. After 24 hours, fines will begin to accumulate.
2. All items must be returned if you are travelling.
3. Items can be returned in the return boxes located in the library or behind reception.

---

If you are **visiting for more than three months**, please see the Librarian about activating additional access to e-resources at the University of Waterloo Library.



# YOUR OFFICE

## Office Supplies

The supply cabinet is located on the second floor underneath the stairs near office 234. You are welcome to help yourself to any necessary supplies. If you are unable to find what you are looking for, please submit your request to [help@perimeterinstitute.ca](mailto:help@perimeterinstitute.ca) for assistance in obtaining/ordering the supplies you need.

## Office Cleaning & Maintenance

All offices are scheduled for cleaning by the Perimeter cleaning staff on a regular basis. Exceptions to regular cleaning are the office blackboards and dish removal. To have your blackboard thoroughly cleaned, please submit your request to [help@perimeterinstitute.ca](mailto:help@perimeterinstitute.ca). Please bring your dirty dishes downstairs into the Bistro. There are also two other designated dish stations (Feynman lounge, 4<sup>th</sup> floor kitchenette) where your dishes can be left.

## Computers

Perimeter Institute currently provides support for Linux, MS-Windows, and Mac based computers. If you have any questions, please submit a help request to [help@perimeterinstitute.ca](mailto:help@perimeterinstitute.ca) or contact the help desk at ext. 3333.

## Printer Services

PrintbyXerox are available on every floor in every wing. Printing (duplex, black and white), copying, and scanning to email is available at all of the Xerox WorkCentres. Colour printing and photocopying is available at the WorkCentres in the 2<sup>nd</sup> floor north (near office 234) and east (room 270) wings. (Faxing is an option only at the 2<sup>nd</sup> floor north WorkCentre.) These machines have many copying and printing capabilities including the ability to enlarge/reduce, duplex print, and staple. A wide variety of output media (including transparencies) can be used.

Our Portal has more information about our Printer Services (<https://pion.perimeterinstitute.ca/Interact/Pages/Section/SubFullTwo.aspx?subsection=3566>). You can find instructions for installing and locating printers as well as how to use our Mobile Print service. (Mobile Print allows visitors to email a document to our print server, which can then be retrieved from any Perimeter printer.)

Perimeter uses North American standards for paper sizes as follows:

- Letter (8.5" x 11")
- Legal (8.5" x 14")
- Tabloid (11" x 17")

To save on paper, please print double-sided (duplex).

Please contact the IT Help Desk at ext. 3333 or send an email to [help@perimeterinstitute.ca](mailto:help@perimeterinstitute.ca) if you have any questions or require printing assistance.

## TELEPHONE USE

Each office is equipped with a telephone and extension number. The main switchboard line is (519) 569-7600.

### Internal Calls

Dial four digit extension number.

### Outgoing Local Calls

Simply dial the area code and the phone number.  
e.g. 519+555-5555

## Long Distance (Canada & US)

Dial 1 + area code + phone number. E.g. 1-519-555-5555.

### International Calls

If you are planning on making long-distance phone calls, please see Visitor Services or Security to purchase a \$5 long distance calling card. You may also obtain calling cards at the Shopper's Drug Mart in Waterloo Town Square (near the corner of Caroline and Erb streets).

# YOUR INFORMATION PORTALS

## **Perimeter Portal:** [pion.perimeterinstitute.ca](http://pion.perimeterinstitute.ca)

Perimeter Institute maintains an extensive information Portal designed to give you the tools and resources you need.

Log on with your username and password information provided in your Visitor Kit.

To request a hands on overview of the tools and resources available on the Portal, please contact IT.

Using the Portal, you can:

- maintain your profile in our Contact System
- book rooms and equipment
- access contact information for all staff
- access library resources
- access policy information about Perimeter Institute
- access forms required for expenses/reimbursements
- access human resources information
- access IT information, such as using wireless and printer resources
- access the Perimeter Institute Events calendar, which lists all talks, colloquia, seminars, conferences/workshops, cultural and social events

## **Perimeter's Public Websites**

Perimeter Institute's website offers a wealth of information about Scientific and Outreach activities (recorded talks and resources), past, current, and future. It also includes a complete list of current research and administrative staff. Check out the website, [www.perimeterinstitute.ca](http://www.perimeterinstitute.ca), for complete details. The general public website [InsideThePerimeter.ca](http://InsideThePerimeter.ca) features stories about Perimeter research and researchers.

## **Interaction with Other Institutions**

Perimeter Institute is located in the heart of southwestern Ontario, and is able to facilitate interaction with the following institutions, each of which is located no more than 1.5 hours away:

Institute for Quantum Computing, Waterloo

University of Waterloo, Waterloo

Wilfrid Laurier University, Waterloo

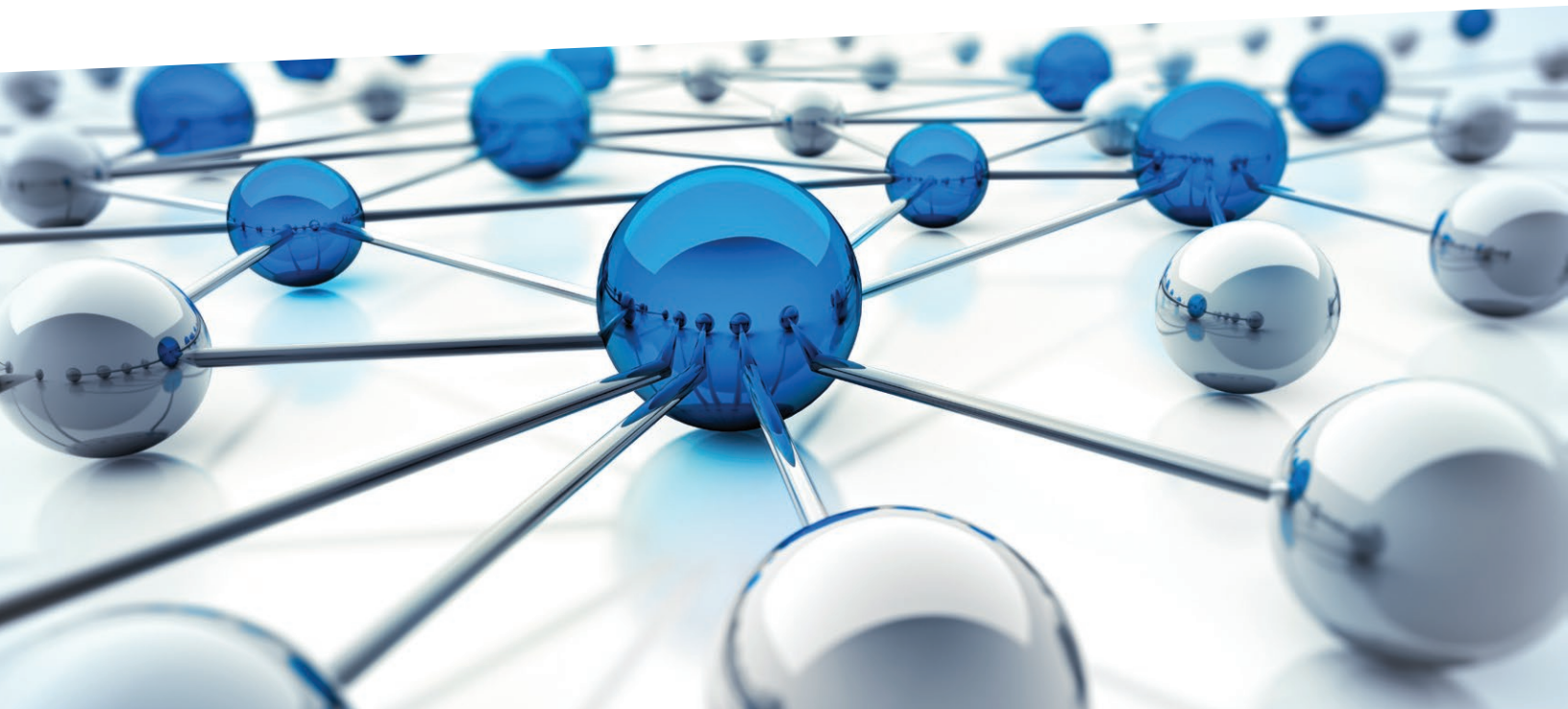
University of Guelph, Guelph

McMaster University, Hamilton

Western University, London

Fields Institute, Toronto

Canadian Institute for Theoretical Astrophysics (CITA), Toronto







The Region of Waterloo offers a unique blend of urban and rural. Located just one hour west of Toronto, the Region is made up of the cities of Cambridge ([www.cambridge.ca](http://www.cambridge.ca)), Kitchener ([www.kitchener.ca](http://www.kitchener.ca)), and Waterloo ([www.waterloo.ca](http://www.waterloo.ca)), as well as the Townships of North Dumfries ([www.northdumfries.ca](http://www.northdumfries.ca)), Wellesley ([www.wellesley.ca](http://www.wellesley.ca)), Wilmot ([www.wilmot.ca](http://www.wilmot.ca)), and Woolwich ([www.woolwich.ca](http://www.woolwich.ca)). This area has great restaurants, live theatre, museums, galleries, and a symphony. Waterloo has a strong arts and culture presence – ideal for the enthusiast, with galleries, studios, museums, and festivals at every turn.

## Grocery and International Food Stores

Kitchener-Waterloo offers traditional large grocery stores as well as specialty/international options, which include: Vincenzo's ([www.vincenzosonline.com](http://www.vincenzosonline.com)), Sabletine Fine Pastries ([www.sabletine.com](http://www.sabletine.com)), Glogowski Euro Food (403 Highland Rd. W., Kitchener), Brady's Meat & Deli ([www.bradysmeats.com](http://www.bradysmeats.com)), and Nougat Bakery ([www.nougat.ca](http://www.nougat.ca)).

Visit Foodlink Waterloo Region ([www.foodlink.ca](http://www.foodlink.ca)) for information on buying local produce.

The closest grocery stores to Perimeter are:

**Valu-Mart** – [www.valumart.ca](http://www.valumart.ca)

75 King St. S., Waterloo (Waterloo Town Square)  
(519) 884-5511

**Sobeys** – [www.sobeys.com](http://www.sobeys.com)

94 Bridgeport Rd. E., Waterloo (Open 24 hours),  
(519) 885-4170  
450 Columbia St. W., Waterloo, (519) 880-9143  
585 Weber St. N., Waterloo, (519) 746-3821

**Zehrs** Grocery stores in Waterloo – [www.zehrs.ca](http://www.zehrs.ca) (Loblaw)

50 Erb St. W., (Beechwood Plaza), (519) 886-4900  
555 Davenport Rd., (Conestoga Mall), (519) 746-9120  
315 Lincoln Rd., (Glenridge Plaza), (519) 885-1360

**Real Canadian SuperStore** (Highland Hills)

875 Highland Rd. W.  
(519) 745-4781

The closest farmers' market to Perimeter is:

**Kitchener Market** – [www.kitchenermarket.ca](http://www.kitchenermarket.ca)

300 King St. E., Kitchener (Open 7am- 2pm excluding Mondays)  
(519) 741-2287

Another farmers' market is:

**St. Jacobs Farmers' Market,**

878 Weber St. N. Woolwich  
[www.stjacobsmarket.com](http://www.stjacobsmarket.com)

Please note that many stores (including grocery stores and restaurants) are open seven days a week, though hours may be reduced on weekends. Visit Kitchener Waterloo Direct to search for grocery stores, specialty shops, services, and more:

[www.kitchenerwaterloodirect.info](http://www.kitchenerwaterloodirect.info)

# HEALTH CARE

Please contact the People & Culture department for information about finding a doctor.

## EMERGENCY HEALTH CARE

The Kitchener-Waterloo area works under a 911 emergency phone number system. For fast response to any emergency, dial 911, and tell the operator the nature of emergency, your name, location of emergency, and information about the emergency.

## TELEHEALTH ONTARIO (1-866-797-0000 toll free)

Telehealth Ontario is a free, confidential telephone service you can call to get health advice or general health information from a Registered Nurse. That means quick, easy access to a qualified health professional, who can assess your symptoms and help you decide your best first step. They can help you decide whether to care for yourself, make an appointment with your doctor, go to a clinic, contact a community service or go to a hospital emergency room.

## WALK-IN CLINICS (No appointment necessary)

If you do not have a doctor in Waterloo Region, or your doctor is not available, medical concerns should be directed to the urgent-care clinics or hospital emergency rooms. Urgent-care clinics or walk-in clinics are medical clinics that have on-site doctors and nurses that can provide limited medical services and operate on a first-come, first-served basis. As these clinics can be very busy, we suggest you call ahead to see what the wait time may be.

**Important note:** Family doctors may designate an on-call doctor who provides after hours services. Individuals with a family doctor should try this avenue prior to going to a walk-in clinic. Some family doctors may terminate individuals from their practice who choose to attend a walk-in clinic rather than their practice.

### Waterloo Walk-In Clinic

University Shops Plaza, 170 University Ave. W., Waterloo  
(519) 725-1514

### Westmount Urgent Care Clinic

751 Victoria St. South, Kitchener  
(519) 745-2273

## PHARMACIES

The following pharmacies are located close to Perimeter Institute:

### Shoppers Drug Mart locations at:

Waterloo Town Square (75 King St. S.)  
(519) 884-1500  
and  
50 Weber St. N., Waterloo (Open 24 hours)  
(519) 880-8083

### Pharmasave Campus

170 University Ave.  
W. Waterloo  
(Right beside the Doctor's  
Office Clinic)  
519-886-2420

[www.shoppersdrugmart.com](http://www.shoppersdrugmart.com)

*Waterloo has a large number of complementary health care providers such as registered massage therapists, chiropractors, naturopaths, optometrists, etc.*

## Emergency Phone Numbers

### Emergency Fire/Police/ Ambulance – 911

#### Grand River Hospital

(519) 742-3611  
835 King St. W.,  
Kitchener

#### St. Mary's General Hospital

(519) 744-3311  
911 Queen's Boulevard, Kitchener

#### Non-Emergency Police

(519) 653-7700

#### Dental Emergency

(519) 883-0505

The dental emergency number is for any dental emergency, including injuries, outside of regular business hours. Payment is at the discretion of the dentist on call at the time. Please ensure you have your dental insurance card with you.



## BANKING

The following banks are located in Uptown Waterloo within walking distance of Perimeter Institute:

### **Scotiabank**

[www.scotiabank.com](http://www.scotiabank.com)

115 King St. S., Waterloo

(519) 886-2500

Note: If you have a cheque that needs to be cashed, please go to Scotiabank. Remember to bring your passport, one other piece of ID and mention that you are a visitor with Perimeter Institute. Foreign currency can also be exchanged here, for a fee.

### **TD Canada Trust**

[www.tdcanadatrust.com](http://www.tdcanadatrust.com)

15 King St. S., Waterloo

(519) 725-3630

### **Bank of Montreal**

[www.bmo.com](http://www.bmo.com)

3 King St. S., Waterloo

(519) 885-9250

### **Canadian Imperial Bank of Commerce (CIBC)**

[www.cibc.com](http://www.cibc.com)

27 King St. N., Waterloo

(519) 886-2960

### **Royal Bank of Canada**

[www.rbc.com](http://www.rbc.com)

Recommended by Perimeter for opening a new account

70-74 King St. S., Waterloo

(519) 747-8335

### **HSBC**

[www.hsbc.ca](http://www.hsbc.ca)

136 King St. S, Waterloo

1 888-310-4722

## POSTAL SERVICES

The closest post office is located in Shoppers Drug Mart at Waterloo Town Square.

## PERIMETER SPOUSAL NETWORK

The Perimeter Spousal Network is a network of spouses of Perimeter students, postdocs, and faculty. They can help you with recommendations for services and activities available in the area. For details, see the People & Culture department.

## LICENSING & VEHICLE TRANSFERS/IMPORT

If you have a valid driver's licence from another province, state, or country, or an International driver's licence, you can use it for up to 60 days after you move to Ontario. If you want to keep driving in Ontario, you must get an Ontario driver's licence. You must use your Ontario licence when you are issued one.

More information on getting an Ontario driver's licence:

[www.mto.gov.on.ca/english/dandv/driver/drvlicen.shtml](http://www.mto.gov.on.ca/english/dandv/driver/drvlicen.shtml)

Other useful MTO pages:

Visiting or moving to Ontario?

[www.mto.gov.on.ca/english/dandv/visiting.shtml](http://www.mto.gov.on.ca/english/dandv/visiting.shtml)

Exchanging an out-of-country licence:

[www.mto.gov.on.ca/english/dandv/driver/exchange.shtml](http://www.mto.gov.on.ca/english/dandv/driver/exchange.shtml)

Please note that if you possess a foreign driver's licence not written in English or French, it must first be translated by a certified translator before presenting to the local MTO office. This can be done at the K-W Multicultural Centre for a fee of \$25 per translation.

**K-W Multicultural Centre**, (519) 745-2531, 102 King St. W.  
Kitchener, [www.kwmc.on.ca](http://www.kwmc.on.ca)

If you have brought a vehicle with you, you have 30 days before you have to register the vehicle and get Ontario licence plates and vehicle permit(s). Here you can find general information about licensing a vehicle in Ontario which will help prepare you with what is involved in vehicle ownership:

[www.mto.gov.on.ca/english/dandv/vehicle/register.shtml](http://www.mto.gov.on.ca/english/dandv/vehicle/register.shtml)

If you are arriving from the United States and wish to bring your car, you will need to pay importing taxes, which will be refunded upon your return to the US; however, there are other fees involved in this process.

For more information and a list of fees, visit [www.riv.ca](http://www.riv.ca).

## INSURANCE

Vehicle insurance is mandatory for any vehicle registered and driven in Ontario. Contact several different insurance brokers to get the best quote. You can contact the same brokers for any of your other insurance needs. Perimeter Institute residents receive a special rate for home, auto and renter's insurance with Donovan Insurance\*. 72 Regina St. N. Waterloo, 519-886-3150

\*must note that you are affiliated with PI to receive special rates.

Note: Be warned that most, if not all, insurance companies will only accept a Canadian or American driving record as proof of driving experience. However, a few insurance brokers will try to take into account your foreign driving records and negotiate with the insurance companies to provide a bit better rate than that of an "international driver."

If you require a map to reach your destination, please see the Visitor Program Coordinator or visit [www.google.ca/maps](http://www.google.ca/maps) to obtain a map, driving directions, and approximate duration of your trip.

### Office Locations

Drive Test Examination Centre, (519) 893-0742  
1405 Ottawa St. N., Unit 11, Kitchener,  
N2A 3Z1

Access the training guide online at:

[www.mto.gov.on.ca/english/dandv/driver/handbook](http://www.mto.gov.on.ca/english/dandv/driver/handbook)

### Driver and Vehicle Licence Issuing Offices:

Tel: (519) 893-8802 Fax: (519) 893-8587

30 Manitou Dr., Unit A, Kitchener  
Mon-Fri, 9 am-5 pm Sat: 9 am-12 pm  
Or  
(519) 893-3966 or 1-800-268-1153  
1400 Weber St. E., Unit 2, Kitchener

8:30 am-5 pm Monday - Friday,  
8:30 am-6 pm on Wednesdays

*Drivers with licences from the following countries can exchange their licence for an Ontario licence: United States (residents of some states must provide a driving abstract dated within six months - check the MTO website for a complete list), Austria, Belgium, France, Great Britain, Germany, Switzerland, Japan, Northern Ireland, and Korea*

## Buses

Grand River Transit operates throughout the cities of Kitchener, Waterloo, and Cambridge on a fixed-route schedule. In particular, there are direct buses from Uptown Waterloo to both universities (Route 7), Fairview Mall (Route 8), and Conestoga Mall (Route 12). Fares are \$3.50 (subject to change) and are good for 60 minutes of travel. Tickets are \$3.25 each and exact change must be used to purchase them. Tickets may be purchased at reduced fares at the Kitchener Bus Terminal or any location displaying the GRT TICKET AGENT sign, including grocery and convenience stores.

Grand River Transit

Kitchener Bus Terminal, 15 Charles St. W., (519) 585-7555, (519) 585-2370 (out-of-town bus, automated attendant)

[www.grt.ca](http://www.grt.ca)

## ION Light Rail Transit

ION light rail travels between Conestoga station in Waterloo and Fairway station in Kitchener, with a total of 19 stations along the route. At Fairway station, ION light rail connects to ION bus (Route 302) and travels to the Ainslie Street Terminal in Cambridge. The closest station to Perimeter Institute is located at Waterloo Public Square. Fares are \$3.25 and are good for 60 minutes of travel.

## Bus Day Pass or Sunday/Holiday Family Pass (\$ 8.50)

The Day Pass is a great deal for shoppers, salespeople, families, or anyone making many trips in one day. If you are travelling by yourself, the Day Pass allows you unlimited rides in Cambridge, Kitchener, and Waterloo for one day. If you are travelling with your family on a Sunday or holiday, the **Sunday/Holiday Family Pass** allows you unlimited rides for two adults and three children or one adult and four children. Children must be under the age of 18. See ticket agent for more details.

For route information, phone (519) 585-7555.

Schedules and routes can be viewed at [www.grt.ca/en/routesschedules/routesandschedules.asp](http://www.grt.ca/en/routesschedules/routesandschedules.asp).

## Car Rentals

Perimeter Institute uses Enterprise Rent-A-Car in Waterloo. Tel: (519) 884-6001. They will pick you up and drop you off.

Note: Please mention you would like a full tank of gas when receiving the car.

Enterprise Rent-A-Car – (519) 884-6001, 379 Weber St. N., Waterloo - [www.enterpriserentacar.ca](http://www.enterpriserentacar.ca)

Waterloo Taxi - (519) 888-7777

## Ride-Share Programs

Waterloo also participates in some rideshare programs: [www.regionofwaterloo.ca/en/exploring-the-region/carsharing.aspx](http://www.regionofwaterloo.ca/en/exploring-the-region/carsharing.aspx).

## Train

Via Rail and GO Transit (for trips to Toronto and beyond - all trips will route through Toronto)

126 Weber St. W., Kitchener

Via Rail - 1-888-842-7245, [www.viarail.ca](http://www.viarail.ca)

GO Transit - 1-888-438-6646, [www.gotransit.com](http://www.gotransit.com)





## ENTERTAINMENT

### Events at Perimeter Institute

Several nights throughout the week include themed activities – such as movie night, family night, or special events. You can check what’s going on at the Bistro on the Events Calendar via the Portal.

### Other Events

The Wellness Accelerators, which includes dedicated members of Perimeter staff, meet monthly to plan and organize numerous social wellness events throughout the year. You will be notified of upcoming events via bulletin boards, weekly news emails, the Perimeter newsletter, and the Infowall. Feel free to contact the Wellness Accelerators at [wellnessaccelerators@pitp.ca](mailto:wellnessaccelerators@pitp.ca) for details about upcoming events.

### Movies

Waterloo boasts four movie theatres that show mainstream features, foreign, documentary, and independent films.

Princess Cinemas  
[www.princesscinemas.com](http://www.princesscinemas.com)  
6 Princess St. W., Waterloo  
(519) 885-2950

Apollo Cinema  
[www.apollocinema.ca](http://www.apollocinema.ca)  
141 Ontario St. N., Kitchener  
(519) 954-5634

Empire Theatres  
[www.empiretheatres.com](http://www.empiretheatres.com)  
415 The Boardwalk, Waterloo  
(519) 576-7600

Princess Twin  
46 King St. N., Waterloo  
(519) 885-2950

Galaxy Cinemas  
[www.cineplex.com](http://www.cineplex.com)  
550 King St. N., Waterloo  
(519) 883-8843

### Live Music



Kitchener - Waterloo Chamber Music Society  
[www.k-wcms.com](http://www.k-wcms.com)  
57 Young St. W., Waterloo  
(519) 886-1673

Maxwell's Concerts and Events  
[www.maxwellwaterloo.com](http://www.maxwellwaterloo.com)  
35 University Ave. E. Waterloo  
226-240-7020

Kitchener - Waterloo Symphony  
[www.kwsymphony.ca](http://www.kwsymphony.ca)  
36 King St. W., Kitchener  
(519) 745-4711 or 1-888-745-4717

The Jazz Room  
[www.kwjazzroom.com](http://www.kwjazzroom.com)  
59 King St N, Waterloo  
(519) 886-3350



## SHOPPING

### **Conestoga Mall – [www.conestogamall.com](http://www.conestogamall.com)**

550 King St. N., Waterloo, (519) 886-5500

Conestoga Mall is located in north Waterloo and offers a combination of large department stores and smaller shops, and a Galaxy Cinema movie theatre.

### **Fairview Park Mall – [www.cfshops.com/Fairview-park.com](http://www.cfshops.com/Fairview-park.com)**

2960 Kingsway Dr., Kitchener, (519) 894-2450

Fairview Park is located in the City of Kitchener close to the expressway, and offers 150 stores and services plus great department stores like Sears, The Bay and Wal-Mart.

### **St. Jacobs Outlet Mall – <https://stjacobsmarket.com>**

25 Benjamin Rd. E., Waterloo, (519) 888-0138

A uniquely designed, bright, and cheery complex in a pleasant country setting at the north edge of Waterloo and only 3 km south of the Village of St. Jacobs.

### **Waterloo Town Square – [www.waterlootownsquare.com](http://www.waterlootownsquare.com)**

75 King St. S., Waterloo, (519) 886-4190

An array of upscale shops, grocery, and restaurants located in the heart of uptown Waterloo.

### **Bridgeport Plaza**

70 Bridgeport Rd. E, Waterloo (corner of Bridgeport and Weber)

A strip mall including a 24-hour grocery store and other small food and service stores.

### **The Boardwalk – [www.the-boardwalk.ca](http://www.the-boardwalk.ca)**

415 The Boardwalk, University & Ira Needles Blvd, Waterloo

A million-square-foot retail development complex on the west side of Kitchener-Waterloo.

### **T&T Westmount Plaza - [www.tntsupermarket.com](http://www.tntsupermarket.com)**

50 Westmount Rd. N., Waterloo, 519-725-2666





## RESTAURANTS

For a complete listing of area restaurants, see the Business Directory of <http://uptownwaterloobia.com>

*Please note: Gratuities are seldom included in Canadian restaurants. It is customary to tip approximately 15% on the total bill before tax, or 20% for exceptional service.*

Please scan the codes below to view a list of restaurants in that category. All of these restaurants are within a 10 minute walk from Perimeter Institute.

Casual Dining



<https://uptownwaterloobia.com/business-category/food-dining-casual-dining>

Fine Dining



<https://uptownwaterloobia.com/business-category/food-dining-cafe-bakery>

Cafe/Bakery



<https://uptownwaterloobia.com/business-category/food-dining-cafe-bakery>

# RECREATION

## Parks

Public parks are a great way to relax and enjoy a fun time with family and friends.

Visit the City of Waterloo's website to download (PDF format) maps of the city's parks and trails: [www.city.waterloo.on.ca](http://www.city.waterloo.on.ca).

## Area facilities

RIM Park – [www.city.waterloo.on.ca](http://www.city.waterloo.on.ca)

2001 University Ave., Waterloo  
(519) 884-5363

Waterloo Memorial Recreation Complex – [www.city.waterloo.on.ca](http://www.city.waterloo.on.ca)

101 Father David Bauer Dr., Waterloo (across from Perimeter)  
(519) 886-1177

Ice rink, swimming pool.

*Wilfrid Laurier University has an Olympic length swimming pool that is open for recreational swimming for a cost of \$170-240 per term.*

*Check [www.laurierathletics.com/generatePage.php?ID=5](http://www.laurierathletics.com/generatePage.php?ID=5) for schedule*

# TOURISM

## Around Waterloo

You'll find every urban amenity in Waterloo! For a comprehensive listing of accommodations, dining, festivals and events, services and transportation, shopping, tours, and other things to do, visit: [www.explorewaterloo.ca](http://www.explorewaterloo.ca).

KW Tourism – during summer months they can be found across the tracks from Perimeter in the train station  
(519) 745-3536, 191 King St. W., Kitchener, [info@kwtourism.ca](mailto:info@kwtourism.ca)

These local tourism websites will help you find everything there is to see and do in Waterloo Region and the surrounding areas.

- Kitchener Downtown – [www.downtownkitchener.ca](http://www.downtownkitchener.ca)
- Cambridge Tourism – [www.cambridge.ca](http://www.cambridge.ca)
- Guelph Tourism – [www.visitguelphwellington.ca](http://www.visitguelphwellington.ca)

Or call (519) 886-2831 to receive a visitor guide –

Visitor Guide Waterloo Region – [www.explorewaterlooregion.com/planning-info/travel-guide](http://www.explorewaterlooregion.com/planning-info/travel-guide)

*For more information and facility listings visit the Recreation section of the City of Waterloo website at: [city.waterloo.on.ca](http://city.waterloo.on.ca)*



Elora Quarry, Ontario

Canoeing the Grand River



Mennonite country, Ontario



Guelph, Ontario

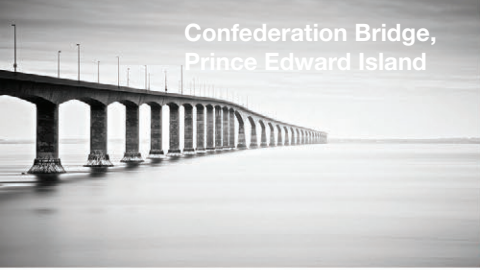


Stratford, Ontario - Swan Walk



West Montrose, Ontario - Covered bridge, built in 1880





Confederation Bridge,  
Prince Edward Island



Lake Louise, Alberta



Mont-Tremblant, Quebec



Parliament Building, Ottawa



Whale watching  
on St. Lawrence river, Quebec



Niagara Falls, Ontario

### Travelling Further Afield

Check out these websites for information about tourism in other nearby cities:

Toronto (approx. 1 hour drive, also accessible by VIA Rail from Kitchener) – [www.DestinationToronto.com](http://www.DestinationToronto.com)

Niagara Falls (approx. 2 hour drive) – [www.niagarafallstourism.com](http://www.niagarafallstourism.com)

Niagara-on-the-Lake (approx. 2 hour drive) – Wine region, [www.niagaraonthelake.com](http://www.niagaraonthelake.com)

Muskoka and the Haliburton Highlands (approx. 2-3 hour drive) – “Cottage Country”  
[www.discovermuskoka.ca](http://www.discovermuskoka.ca) and [www.haliburton-tourism.com](http://www.haliburton-tourism.com)

### Across Canada

Follow the links to tourism websites from across Canada:

British Columbia – [www.hellobc.com](http://www.hellobc.com)

Alberta – [www.travelalberta.com](http://www.travelalberta.com)

Saskatchewan – [www.tourismsaskatchewan.com](http://www.tourismsaskatchewan.com)

Manitoba – [www.travelmanitoba.com](http://www.travelmanitoba.com)

Ontario – [www.destinationontario.com](http://www.destinationontario.com)

Quebec – [www.bonjourquebec.com](http://www.bonjourquebec.com)

New Brunswick – [www.tourismnewbrunswick.ca](http://www.tourismnewbrunswick.ca)

Nova Scotia – [www.novascotia.com](http://www.novascotia.com)

Prince Edward Island – [www.tourismpei.com](http://www.tourismpei.com)

Newfoundland and Labrador – [www.newfoundlandandlabrador.com](http://www.newfoundlandandlabrador.com)

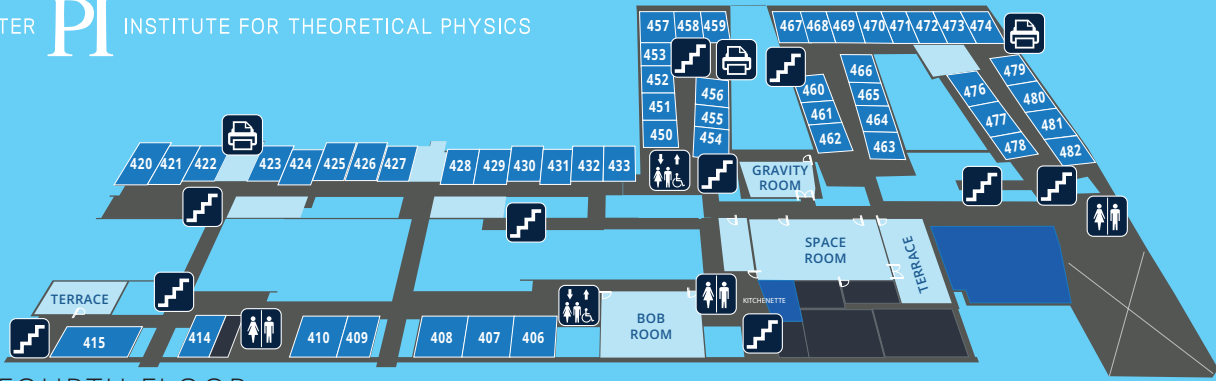
Yukon – [www.travel yukon.com](http://www.travel yukon.com)

Northwest Territories – [www.spectacularnwt.com](http://www.spectacularnwt.com)

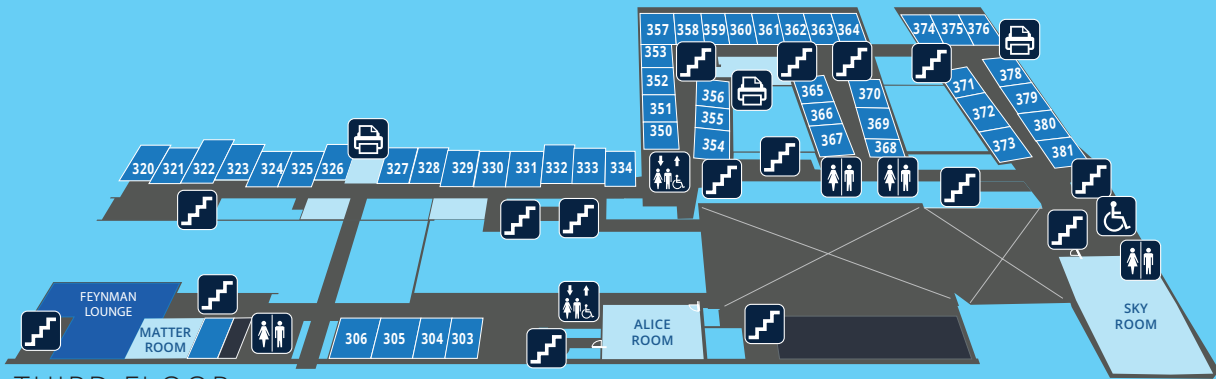
Nunavut – [www.travelnunavut.ca](http://www.travelnunavut.ca)



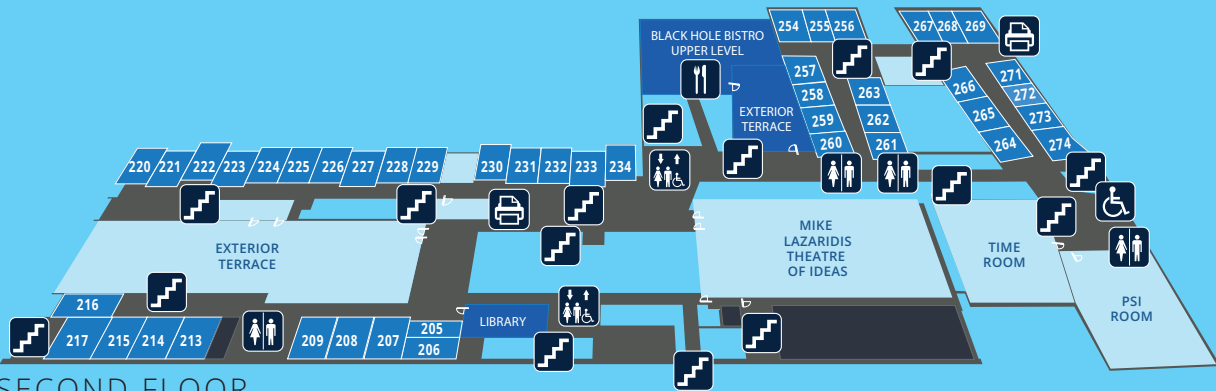




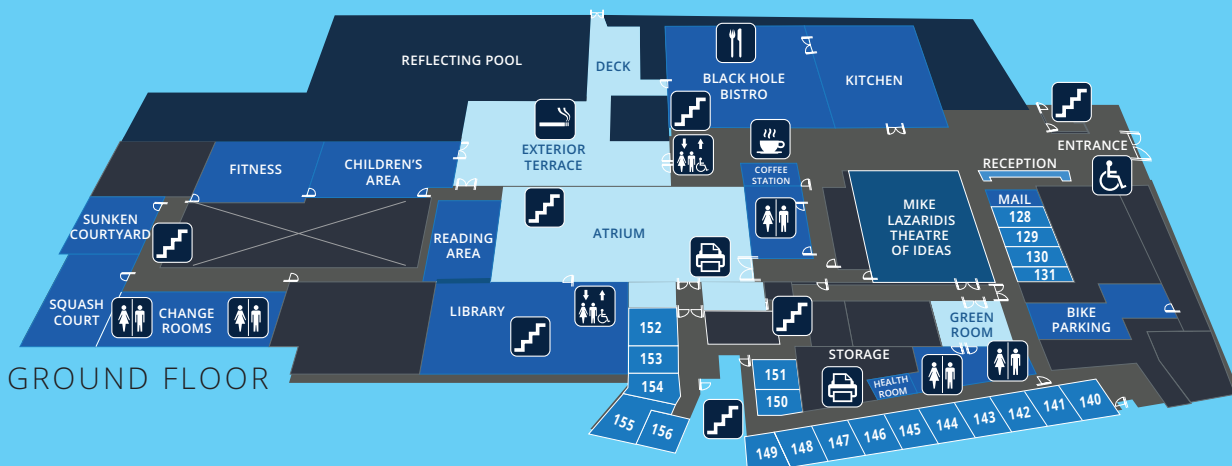
FOURTH FLOOR



THIRD FLOOR



SECOND FLOOR



GROUND FLOOR

	OFFICES		FACILITIES
	COLLABORATION AREAS		UTILITIES





# UNIVERSITY OF WATERLOO

## PARKING INDEX

### VISITOR PARKING

- All Day, Every Day
- C, N, W, X:** \$5 per day - pay and display
- Lot X** is free on weekends
- HV:** Weekdays: \$2 per hour with \$10 deposit on entry. Deposit reduces throughout day. After 3 pm and weekends: \$5 coin entry
- M:** \$6 pay and display
- D:** Weekdays: \$2 per hour up to daily maximum of \$15. After 5 pm and weekends: \$5 coin entry
- P:** \$4 coin entry for St. Jerome's University, Renison University College and St. Paul's University College. \$1 per hour up to a \$4 daily maximum at Conrad Grebel University College
- OV:** \$5 coin exit
- J, S, V:** \$5 pay and display. Pay in lot S
- CL, UWP:** \$5 pay and display

### AFTER 4 PM AND WEEKENDS

- A, B, EC, H, R:** \$5 coin entry

### PERMIT PARKING

- Faculty and Staff:** A, B, H, K, L, N, O, R, T, X
- Resident:** CL, J, S, V, UWP, T
- Parking in any ungaraged lot after 4:30 pm with valid Faculty/Staff Permit

### MOTORCYCLES

- Purchase a term or day pass from Parking Services in the COM building for use at motorcycle pads

### ACCESSIBLE PARKING

- Accessible parking for persons with disabilities is available in most lots. For details visit [parking.uwaterloo.ca](http://parking.uwaterloo.ca)

### SHORT-TERM PARKING

- Fifteen minute parking is available on the Ring Road at Environment 2 and Ira G. Needles Hall. Meter parking is available, visit the Parking website for locations at: [parking.uwaterloo.ca](http://parking.uwaterloo.ca)

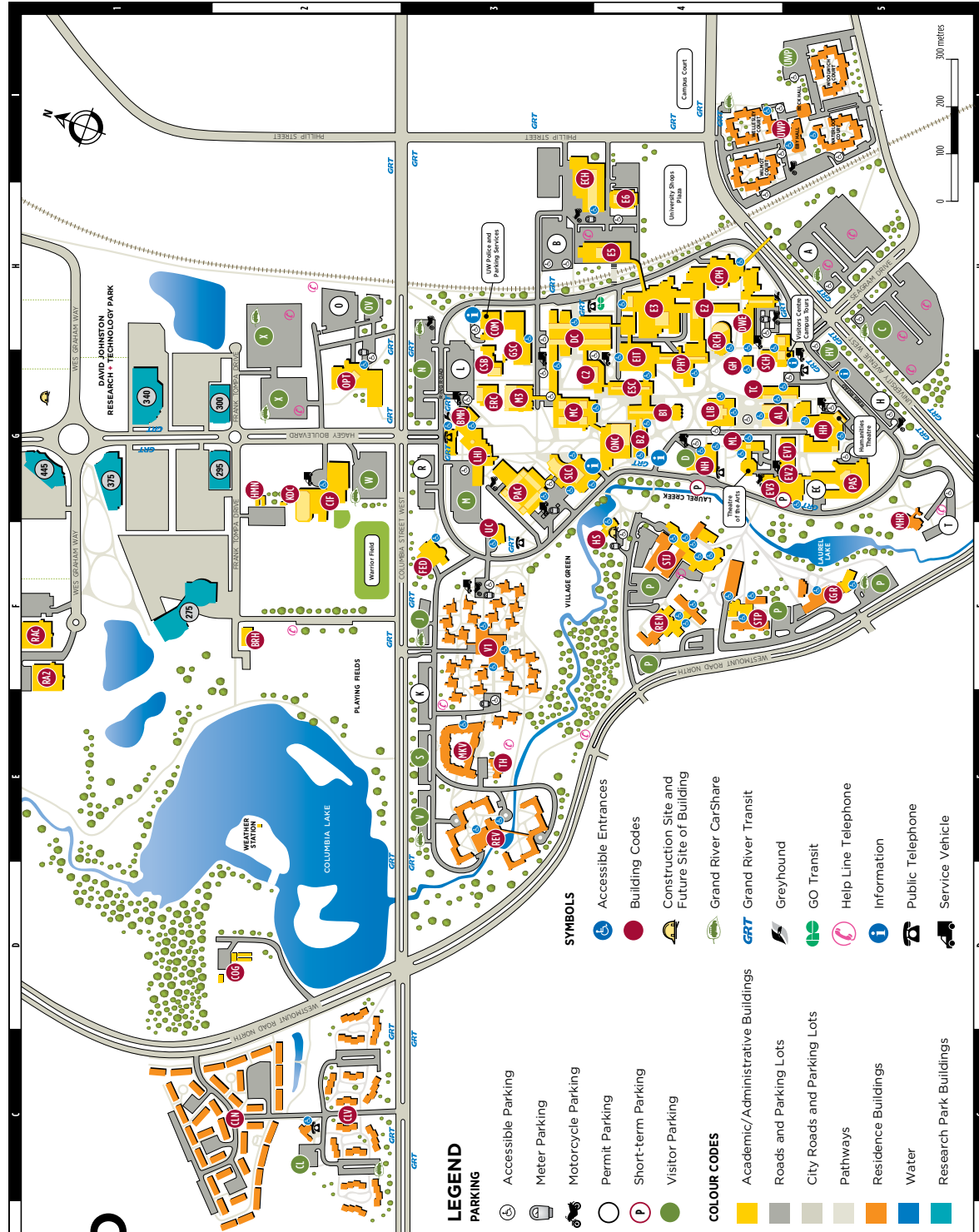
### WATCARD PAYMENT

- Available at Lot C, N, W, X, M, UWP

## BUILDING INDEX

### BUILDING - LOCATION

- AL** Arts Lecture Hall - G4
- B1** Biology 1 - G4
- B2** Biology 2 - G4
- BMH** B.C. Matthews Hall - G3
- BRH** Brubacher House - F2
- C2** Chemistry 2 - G3, G4
- CGR** Conrad Grebel University College - F5
- CF** Columbia Icefield - G2
- CLN** Columbia Lake Village North - B2, C1, C2
- CLV** Columbia Lake Village - B2, C2, D2
- COG** Columbia Greenhouses - D2
- COM** Commissary - H3
- CPH** Carl A. Pollock Hall - H4
- CSB** Central Services Building - G3
- DC** William G. Davis Computer Research Centre - H3, H4
- DWE** Douglas Wright Engineering Building - H4
- E2** Engineering 2 - H4
- E3** Engineering 3 - H3, H4
- E5** Engineering 5 - H3, H4
- E6** Engineering 6 - H4
- ECH** East Campus Hall - H3, H4, I3, I4
- EIT** Centre for Environmental & Information Technology - G4
- ERC** Energy Research Centre - G3
- EV1** Environment 1 - G5
- EV2** Environment 2 - G5
- EV3** Environment 3 - G5
- FED** Earth Sciences & Chemistry - G4
- FEC** Federation Hall - F3
- GA** 335 Gage Street - see back page
- GH** Graduate House - G4
- GSC** General Services Complex - G3, H3
- H3C** H.C. Matthews Hall - H3, H4
- HMN** Hildegard Marsden Nursery - G2
- HS** Health Services - F4
- KDC** Klermer Day Care - G2
- LHI** Lyle S. Hallman Institute for Health Promotion - G3
- LB** Dana Porter Library - G4
- M3** Mathematics 3 - G3
- MHR** Mathema & Computer Building - G3
- MKV** Minota Hagey Residence - F5, G5
- ML** William Lyon Mackenzie King Village - E3
- ML** Modern Languages - G4
- NH** Ira G. Needles Hall - G4
- OPT** School of Optometry - G2
- PAC** Physical Activities Complex - G3
- PAS** Psychology, Anthropology, Sociology - G5
- PHR** School of Pharmacy - see back page
- PHY** Physics - G4, H4
- QNC** Quantum Nano Centre - G4
- RAC** Research Advancement Centre - F1
- RA2** Research Advancement Centre 2 - F1
- RCH** J.R. Coutts Engineering Lecture Hall - H4
- REN** Renison University College - F4
- REV** Ron Eydt Village - E3
- SCH** South Campus Hall - G4, G5, H5
- SLC** Student Life Centre - G3
- STJ** St. Jerome's University - F4
- STP** St. Paul's University College - F4
- TC** William M. Tatham Centre for Co-operative Education & Career Services - G4, G5
- TH** Tutors' Houses - E3
- UWP** University Club - F3
- VI** University of Waterloo Place - I4, I5
- VI** Student Village 1 - E3, F3



## LEGEND

### PARKING

- Accessible Parking
- Meter Parking
- Motorcycle Parking
- Permit Parking
- Short-term Parking
- Visitor Parking

### COLOUR CODES

- Academic/Administrative Buildings
- Roads and Parking Lots
- City Roads and Parking Lots
- Pathways
- Residence Buildings
- Water
- Research Park Buildings

## SYMBOLS

- Accessible Entrances
- Building Codes
- Construction Site and Future Site of Building
- Grand River CarShare
- Grand River Transit
- Greyhound
- GO Transit
- Help Line Telephone
- Information
- Public Telephone
- Service Vehicle





Ontario 

PERIMETER  INSTITUTE FOR THEORETICAL PHYSICS

Canada 

[www.perimeterinstitute.ca](http://www.perimeterinstitute.ca)

Charitable registration number: 88981 4323 RR0001